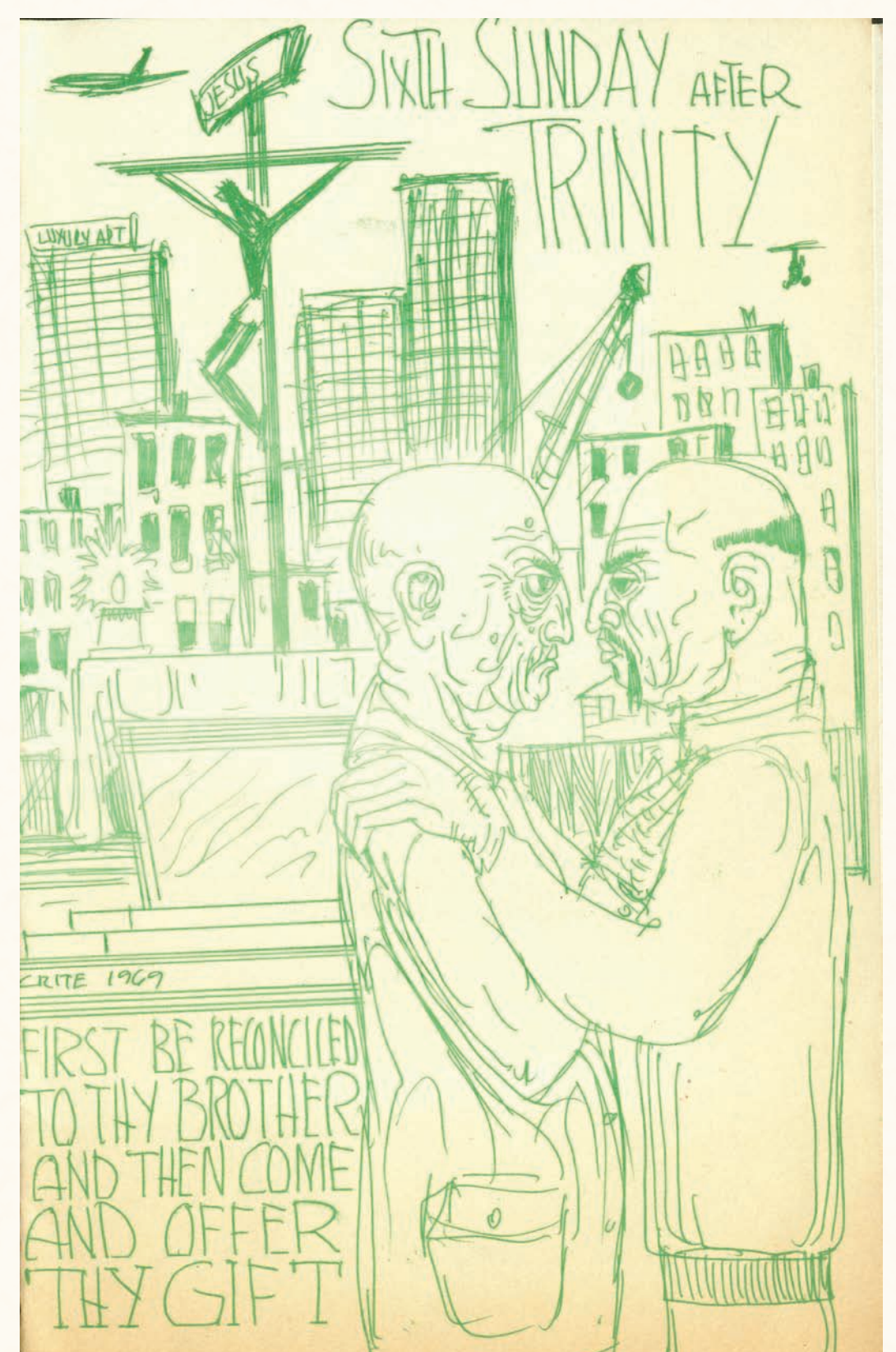
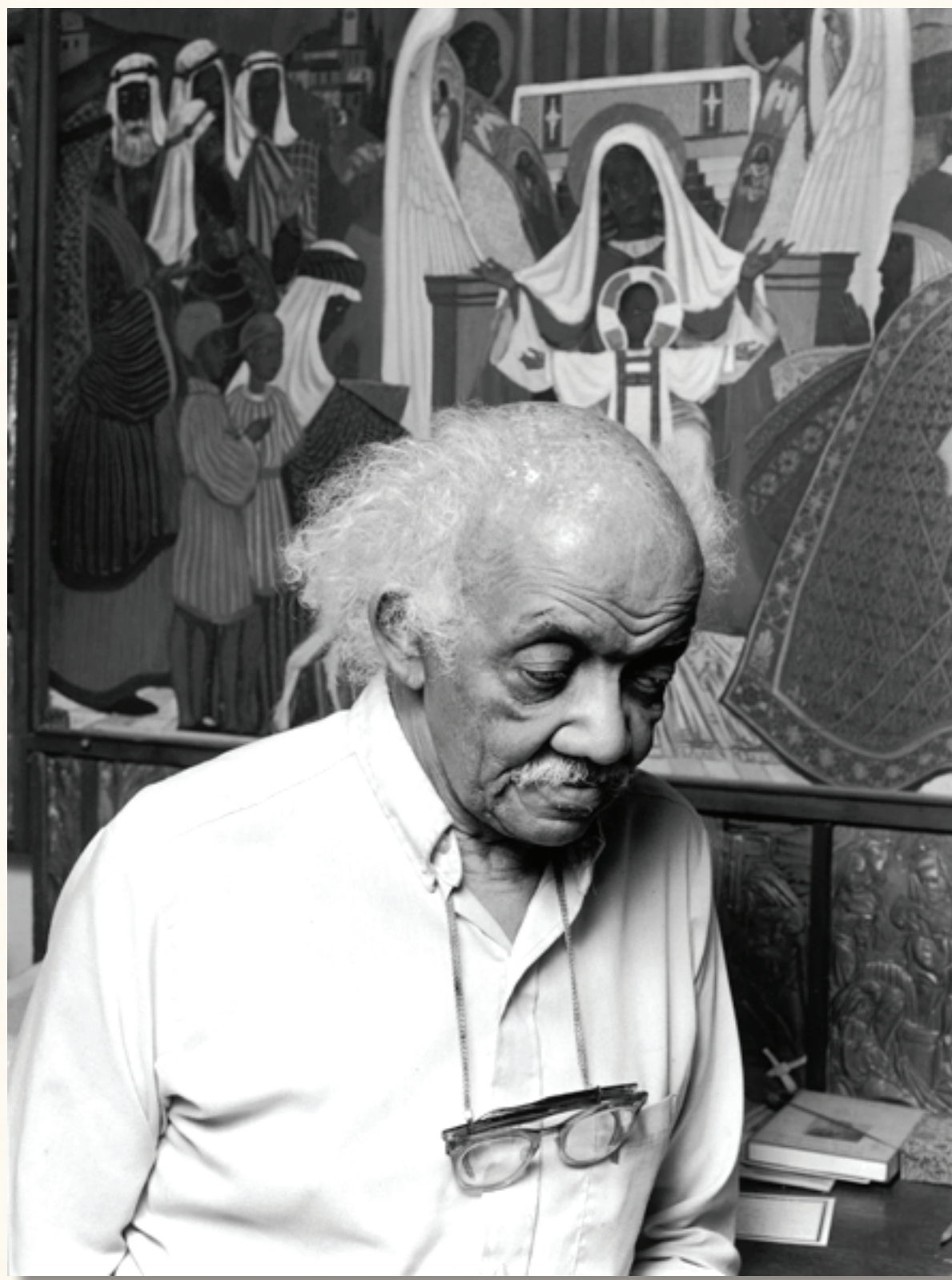
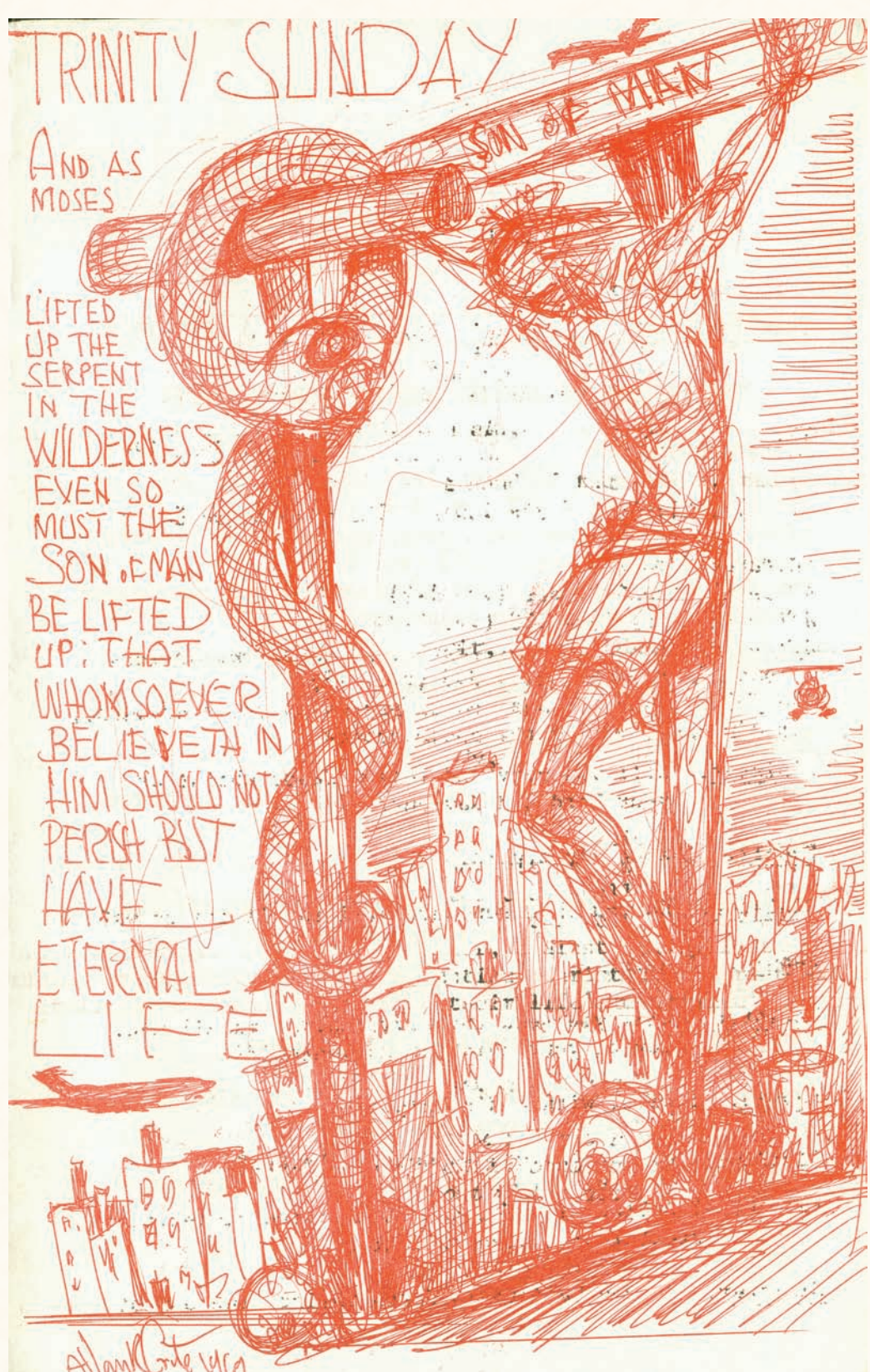


A PAGE FROM THE LONG AND
AMAZING HISTORY OF ST. STEPHEN
AND THE INCARNATION EPISCOPAL CHURCH

Alan Crite's Art



Allan Crite was a renowned painter and life-long Episcopalian. He became interested in St. Stephen's because of Bill Wendt's social activism.

At the church's invitation, **Crite drew bulletin covers** in his Boston studio for some late '60s services.

Mr. Crite's paintings have been displayed in the Museum of Modern Art, the Corcoran Gallery, and the National Cathedral.

He died in 2007.



WIDENING THE CIRCLE THE CAMPAIGN FOR ST. STEPHEN'S